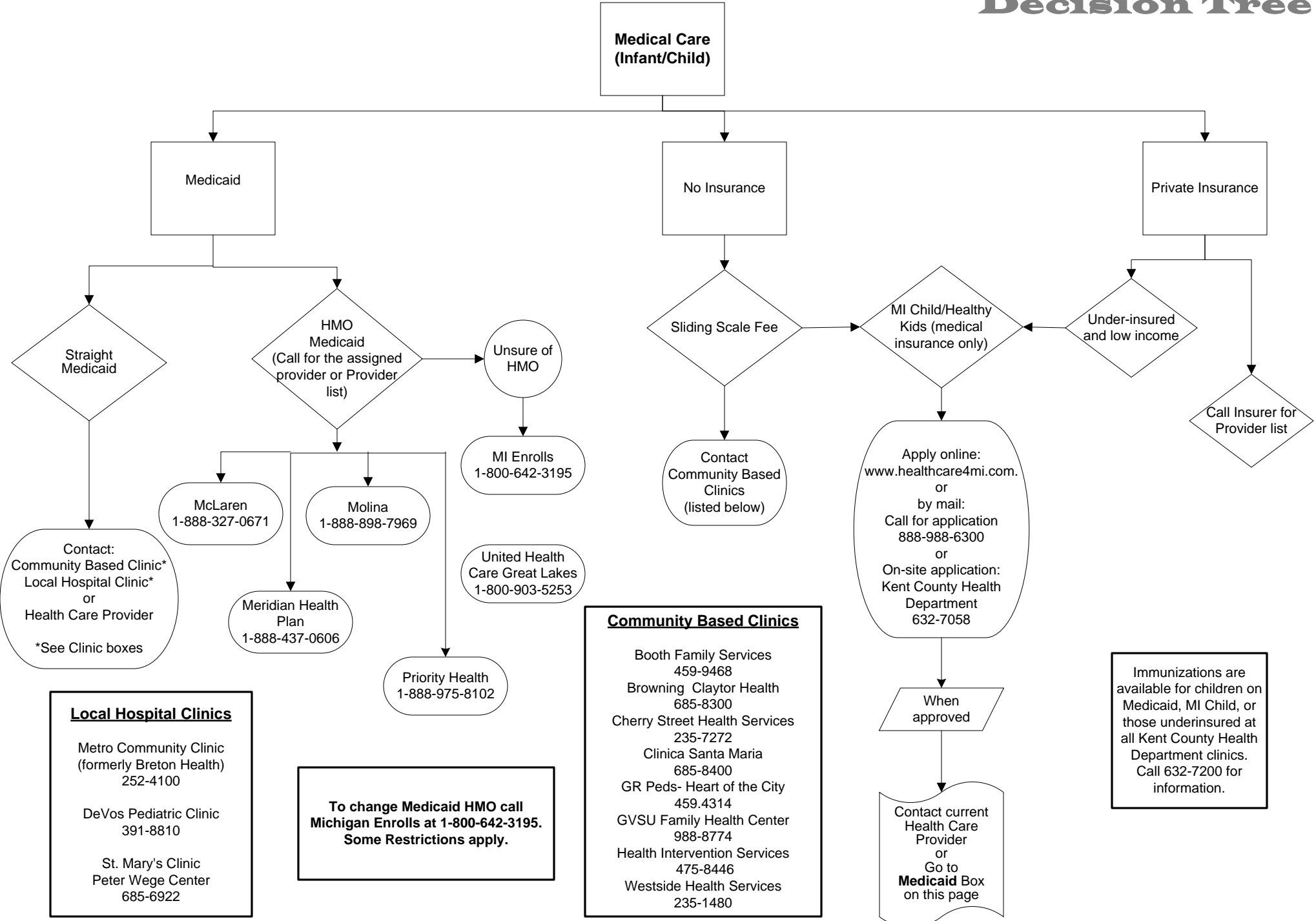


Decision Tree



- Community Based Clinics**
- Booth Family Services 459-9468
 - Browning Claytor Health 685-8300
 - Cherry Street Health Services 235-7272
 - Clinica Santa Maria 685-8400
 - GR Peds- Heart of the City 459.4314
 - GVSU Family Health Center 988-8774
 - Health Intervention Services 475-8446
 - Westside Health Services 235-1480

- Local Hospital Clinics**
- Metro Community Clinic (formerly Breton Health) 252-4100
 - DeVos Pediatric Clinic 391-8810
 - St. Mary's Clinic Peter Wege Center 685-6922

To change Medicaid HMO call Michigan Enrolls at 1-800-642-3195. Some Restrictions apply.

Immunizations are available for children on Medicaid, MI Child, or those underinsured at all Kent County Health Department clinics. Call 632-7200 for information.